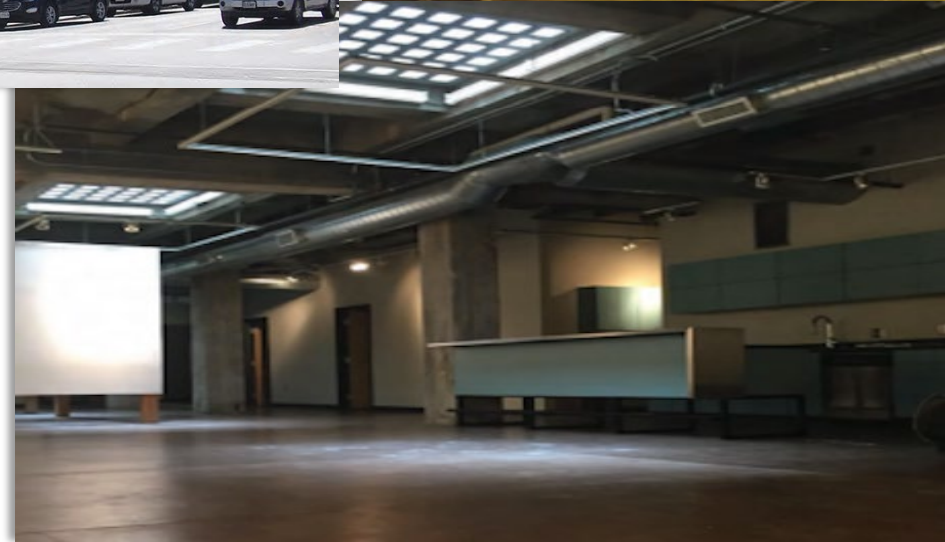




FOR LEASE: 1900 Main Street Kansas City, MO



PROPERTY INFO

- + 6,278 SF, divisible to 3,000 SF
- + Centrally located in the Crossroads on the Street Car line
- + Rare and unique lower level space with skylights, polished concrete floors and 12-foot ceilings

\$15.00psf modified gross lease

Lynette Russ

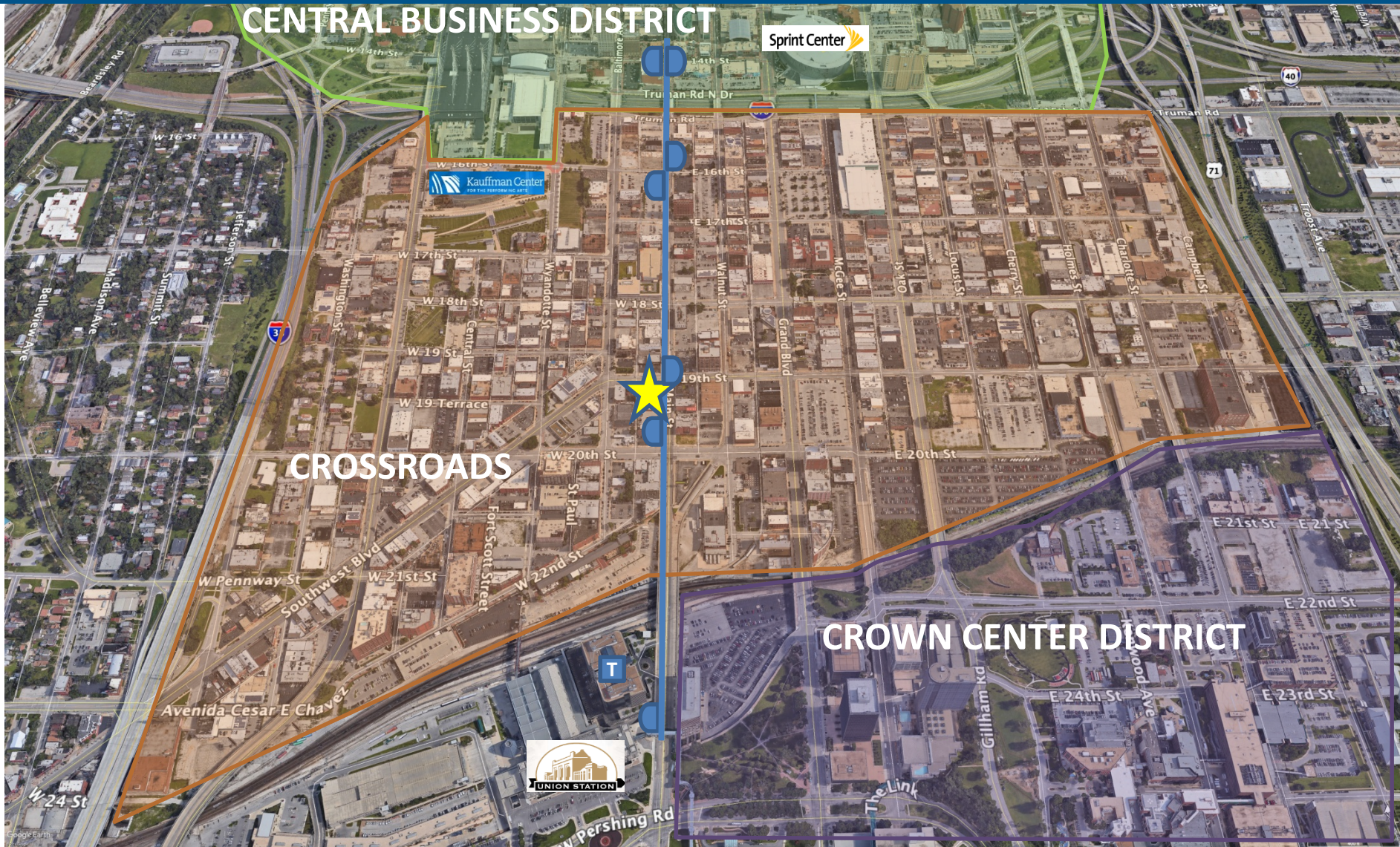
lynette@cadencekc.com

913.747.3309

CADENCE
COMMERCIAL REAL ESTATE



FOR LEASE: 1900 Main Street Kansas City, MO

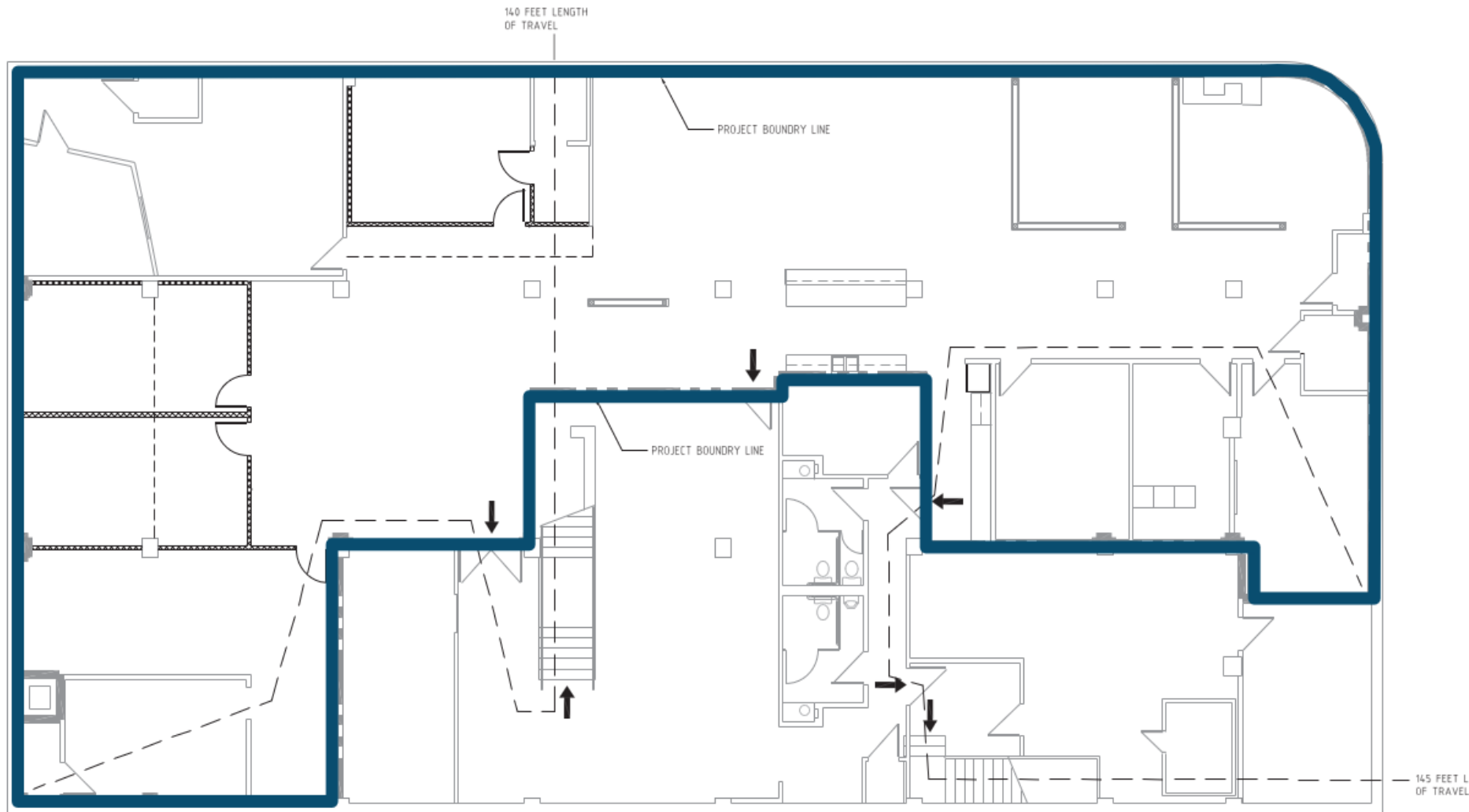


Lynette Russ
lynette@cadencekc.com
913.747.3309

CADENCE
COMMERCIAL REAL ESTATE



FOR LEASE: 1900 Main Street Kansas City, MO

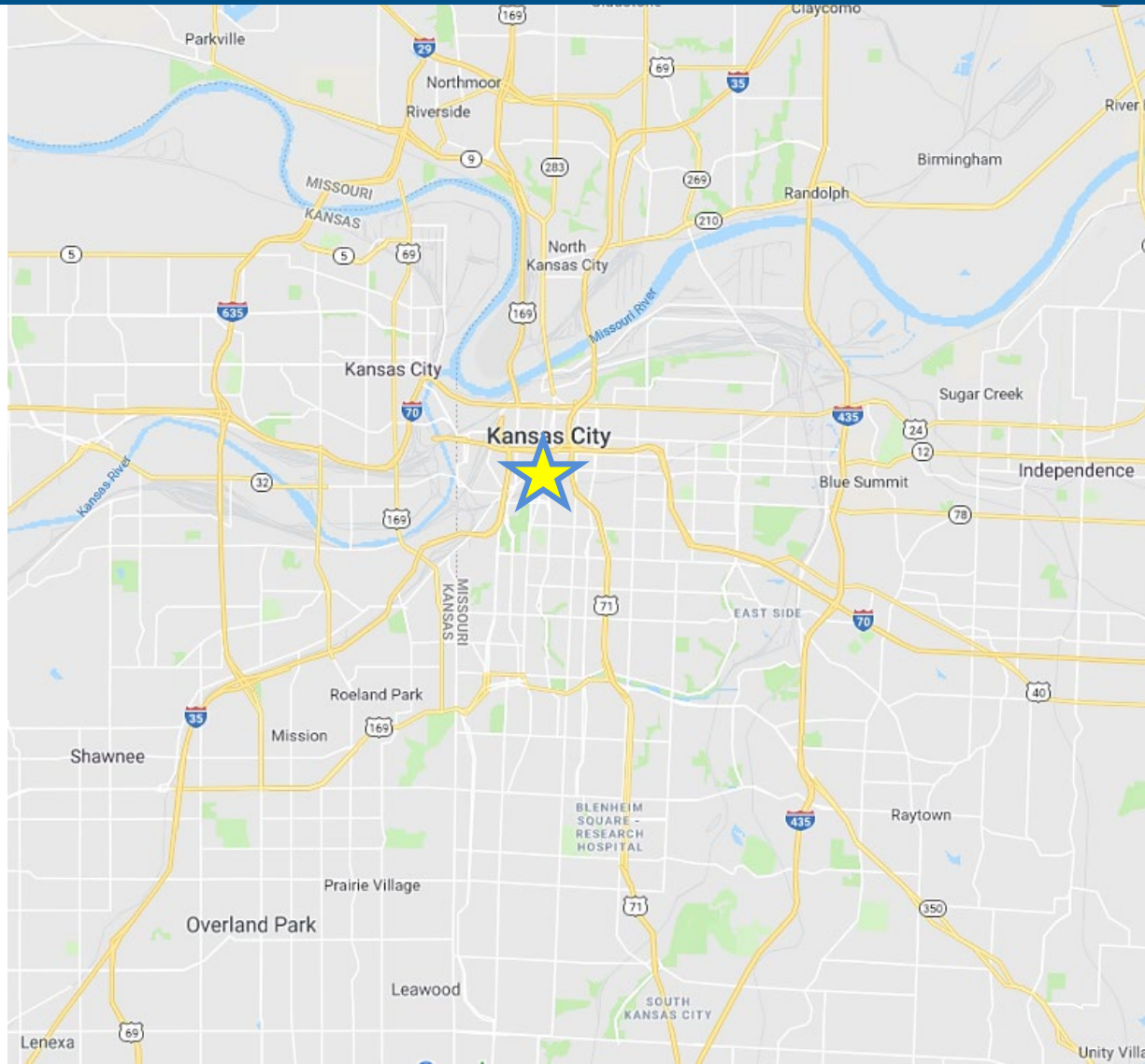


Lynette Russ
lynette@cadencekc.com
913.747.3309

CADENCE
COMMERCIAL REAL ESTATE



FOR LEASE: 1900 Main Street Kansas City, MO



Lynette Russ
lynette@cadencekc.com
913.747.3309

CADENCE
COMMERCIAL REAL ESTATE

7939 Floyd, Suite 200, Overland Park, KS 66204 • 913.782.9000 • cadencekc.com